

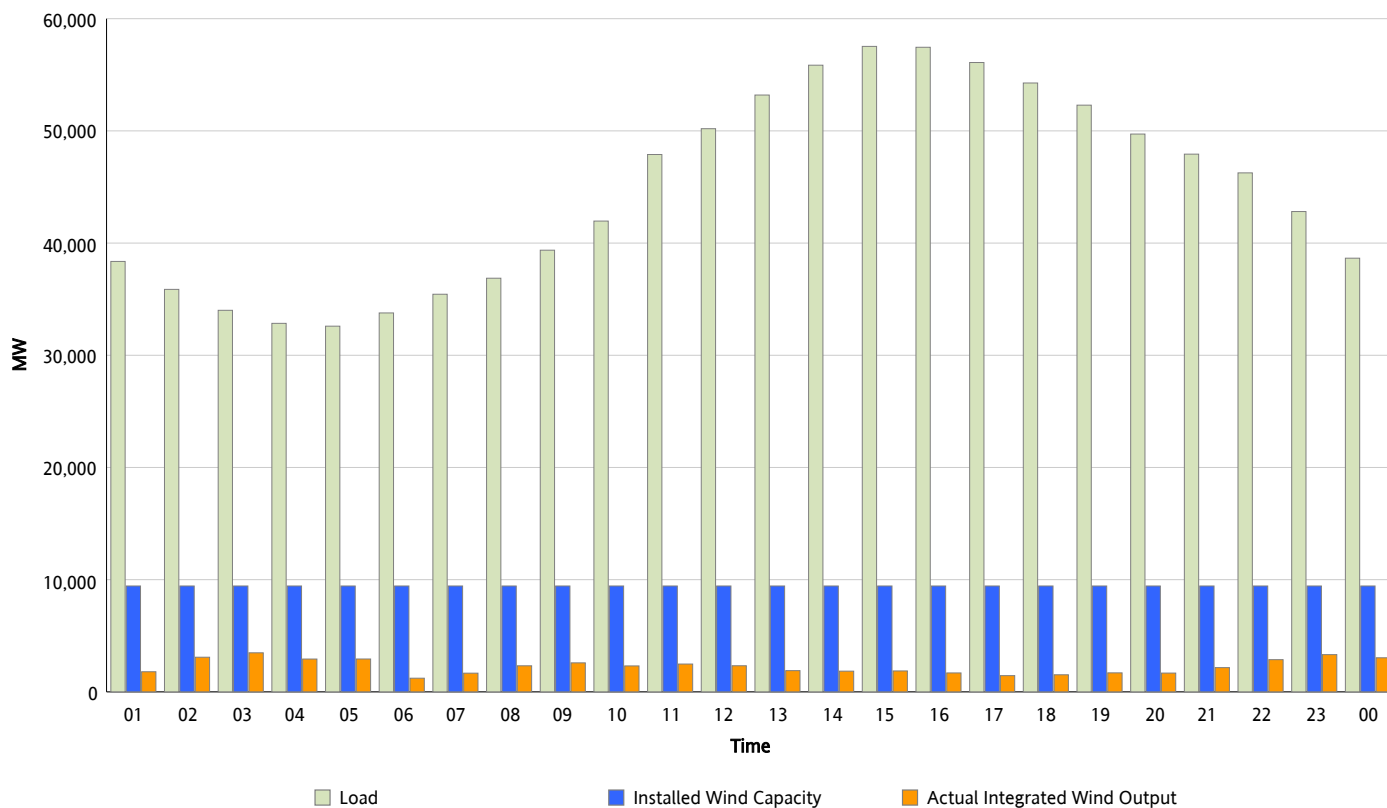


ERCOT Grid Operations

Wind Integration Report : 06/06/2012

| | |
|----------------------|-----------|
| Peak Load | 57,534 MW |
| Load Peak Hour (HE) | 15 |
| Wind Over Peak | 1,867 MW |
| Wind Record 04/13/12 | 7,925 MW |
| Max Wind Value* | 3,722 MW |
| Wind Peak Time | 02:00 |
| Wind Integration % | 10.66 % |

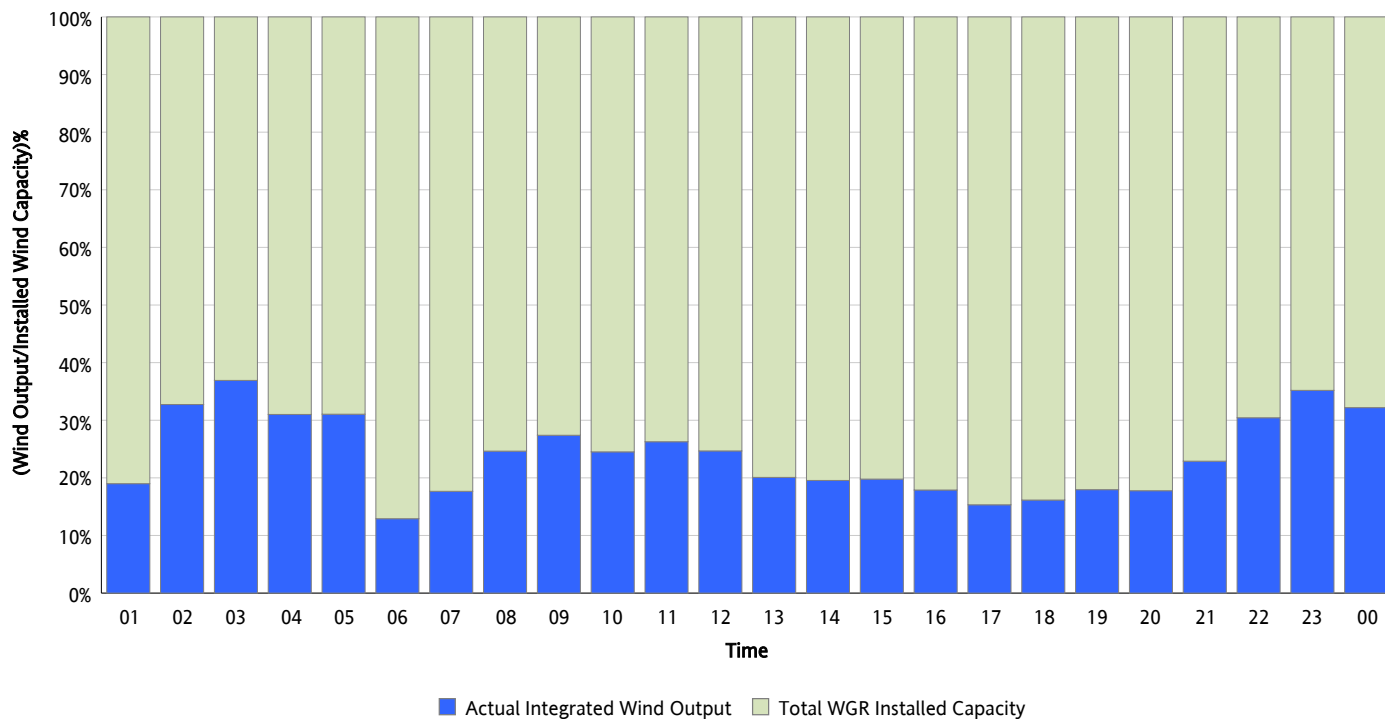
Hourly Average Actual Load vs. Actual Wind Output
06/06/2012



** Wind Record and Wind Max represent instantaneous values and the rest of the values are integrated over the hour*

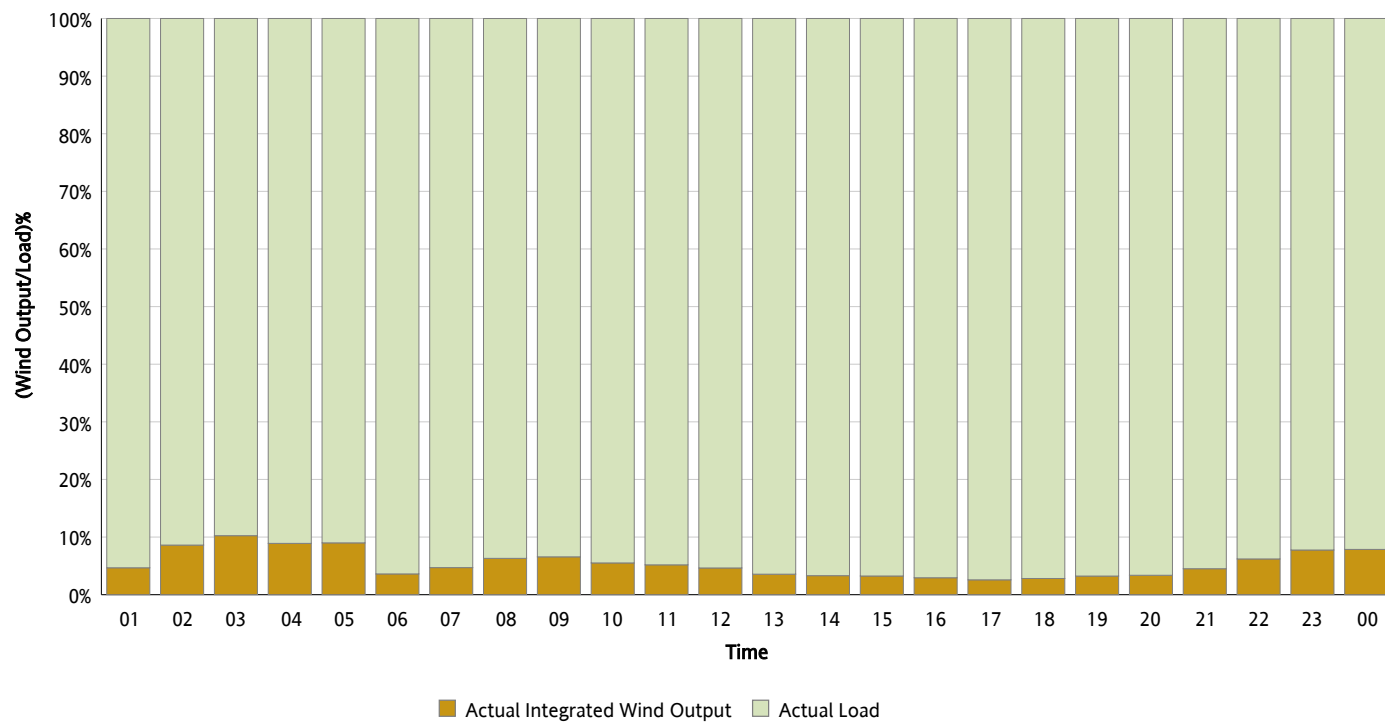
Actual Wind Output as a Percentage of the Total Installed Wind Capacity

06/06/2012



Actual Wind Output as a Percentage of the ERCOT Load

06/06/2012



ERCOT Load vs. Actual Wind Output

05/30/2012 - 06/06/2012

